

The logo features the word 'Ukulele' in a colorful, cursive font. The letters are colored as follows: 'U' is purple, 'k' is orange, 'u' is yellow, 'l' is pink, 'e' is blue, and 'l' is purple. A small illustration of a brown ukulele is positioned behind the first 'u'. Below 'Ukulele' is the text 'FOR CHILDREN' in a bold, black, sans-serif font. In the top right corner, there is a stylized yellow sun with radiating lines.

Ukulele FOR CHILDREN

Sunshine...

Easy Duet and Composition Sheets in D Major
Arranged for low G and high G tuning

Created by Christina O'Brien

Creative
KEYS

You Are My Sunshine

Key of D Major, 4/4

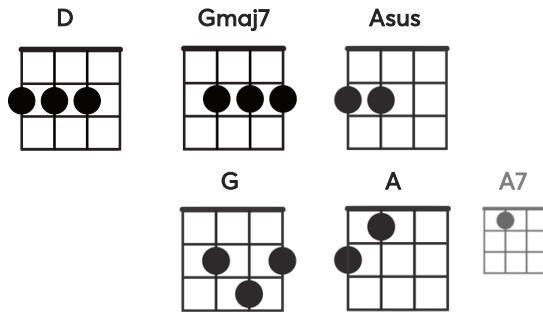
Words and Music by Jimmie Davis
© 1940 Peer International Corporation

The CHORDS

Modified chords on FRET 2*

Each chord will get
2 BEATS

Alternate chords



Verse

D D D D
The other night dear, as I lay dreaming
G G D D
I dreamt that you were by my side
G G D D
When I awoke dear, I was mistaken
D A D D
You were gone, and then I cried

Chorus

D D D D
You are my sunshine, my only sunshine
G G D D
You make me happy, when skies are grey
G G D D
You'll never know dear, how much I love you
D A D D
Please don't take my sunshine away


Additional NEW Verse lyrics

D D D D
The other day dear, as we were walking
G G D D
The sun then went be-hind a cloud
G G D D
It didn't matter, 'cause when I'm with you
D A D D
The sun-shine, is always around

SUNSHINE - low G Ukulele *simple DUET*

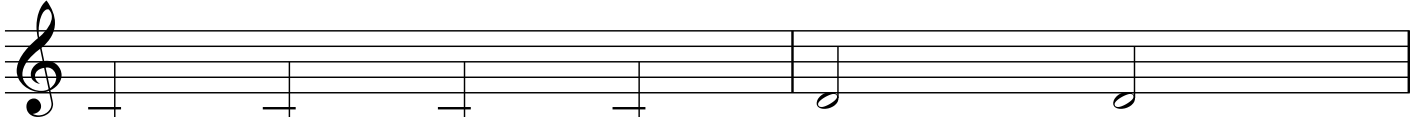
VERSE

D D




The other night dear, as I lay dream - ing. I dreamt that

3 G D




you were by my side. When I a-

5 G D



woke dear, I was mis - ta - ken. You were

7 D A D




gone, and then I cried. (You are my...)

SUNSHINE - low G Ukulele *simple DUET*

CHORUS

9 D D



(You are my) sun - shine. My only sun - shine. You make me

Detailed description: This block contains the first two measures of the chorus. Measure 9 starts with a treble clef and a D chord. The melody consists of quarter notes: G4, A4, B4, and C5. Measure 10 also starts with a D chord and continues the melody with quarter notes: B4, A4, G4, and F4.


11 G D



hap - py, when skies are grey. You'll never

Detailed description: This block contains measures 11 and 12. Measure 11 starts with a G chord and has a half note G3. Measure 12 starts with a D chord and has a half note G4. The lyrics are split across the two measures.

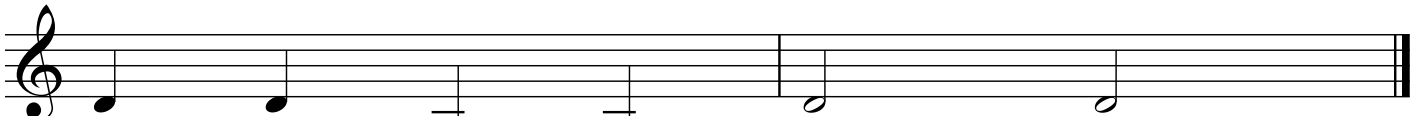
13 G D



know dear, how much I love you. Please don't

Detailed description: This block contains measures 13 and 14. Measure 13 starts with a G chord and has a half note G3. Measure 14 starts with a D chord and has a half note G4. The lyrics are split across the two measures.

15 D A D



take my sun - shine a - way.

Detailed description: This block contains the final two measures of the chorus. Measure 15 starts with a D chord and has a half note G3. Measure 16 starts with an A chord and has a half note G3. The lyrics are split across the two measures.

SUNSHINE - high G Ukulele *simple DUET*

VERSE

The other night dear, as I lay dream - ing. I dreamt that
you were by my side. When I a-
woke dear, I was mis - ta - ken. You were
gone, and then I cried. (You are my...)

Chords: D, D, G, D, G, D, D, A, D

Measure numbers: 1, 3, 5, 7

Time signature: 4/4



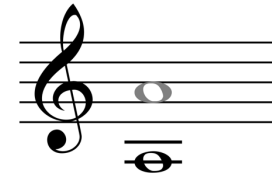
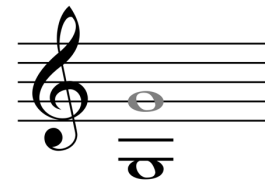
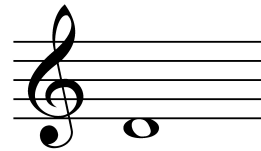
Composition Challenge:

Create your own cool bass line DUET to play.
 Follow the chord progression that is outlined.
 Decide if it will fit best with the VERSE or CHORUS

D

G

low A

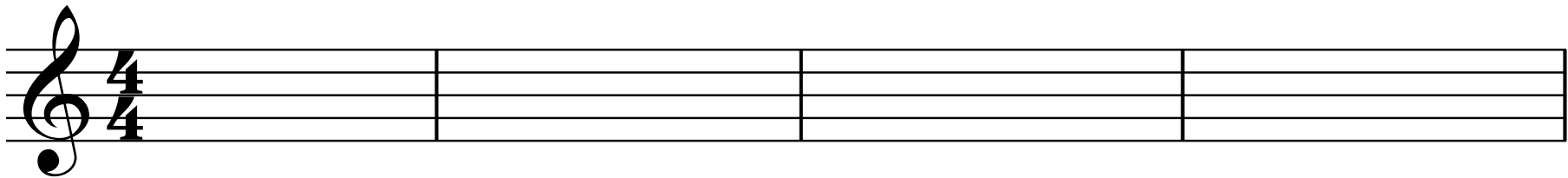


D

D

G

D



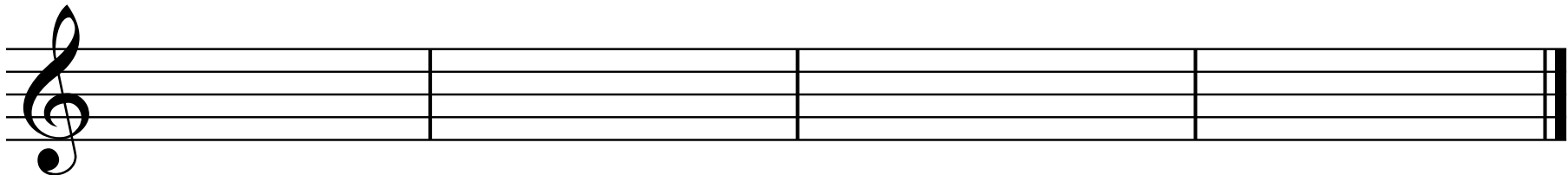
G

D

D

A

D





Sunshine - COMPOSITION!

Composition Challenge:

Create **new lyrics** for the **VERSE**. Make it about something or someone who makes you happy!

Follow the same rhythm pattern from the original verse (*try singing your words to see if they fit*)

Rhyme the end of line 2 with the end of line 4

D

D

D

D

1

G

G

D

D

2

*

G

G

D

D

3

D

A

D

D

4

*