



# SPOOKULELE



*mp* Spoo-ky lit - tle uke. You are still so cute. U - ku - le - le, spoo-ku - le - le. Mi-nor mode's a hoot!

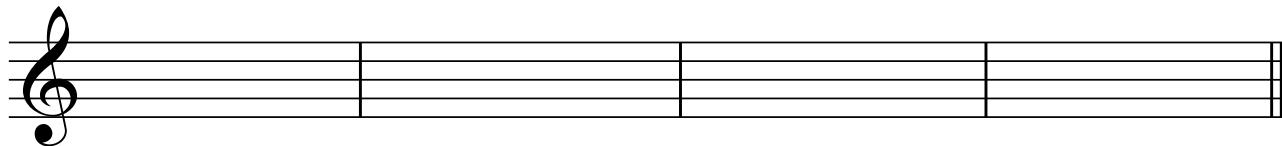


*mf* Hold on lit - tle uke. Is it just a fluke? Same fret pat-tern but now on a high - er string to boot!



*mp* Spoo-ky lit - tle uke. Mi-nor mode is cool. It is spoo-ky and it's koo-ky. Spoo - ku - le - le BOO!

Create your own spooky pattern using E, F# and G.



Then transpose the same pattern up to A, B and C.

