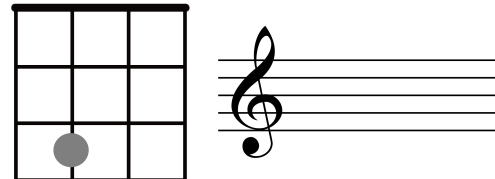




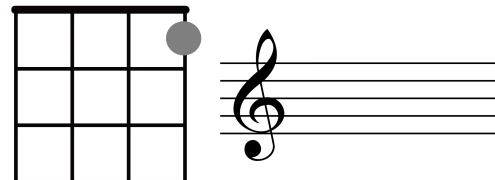
# FRET EQUATIONS

Fill in the missing answers, frets and treble staff notes.

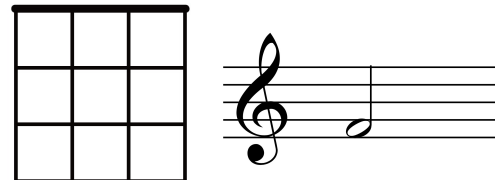
1) The **C** string + fret \_\_\_\_\_ = \_\_\_\_\_



2) The \_\_\_\_\_ string + fret **3** = \_\_\_\_\_



3) The **E** string + fret \_\_\_\_\_ = \_\_\_\_\_



## NEXT LEVEL QUESTIONS:

Which fret on the C string will you use to make G?

Which fret on the G string will you use to make D?

